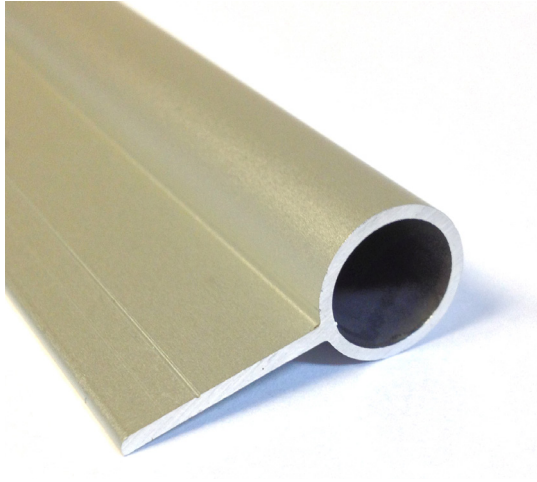


FP100



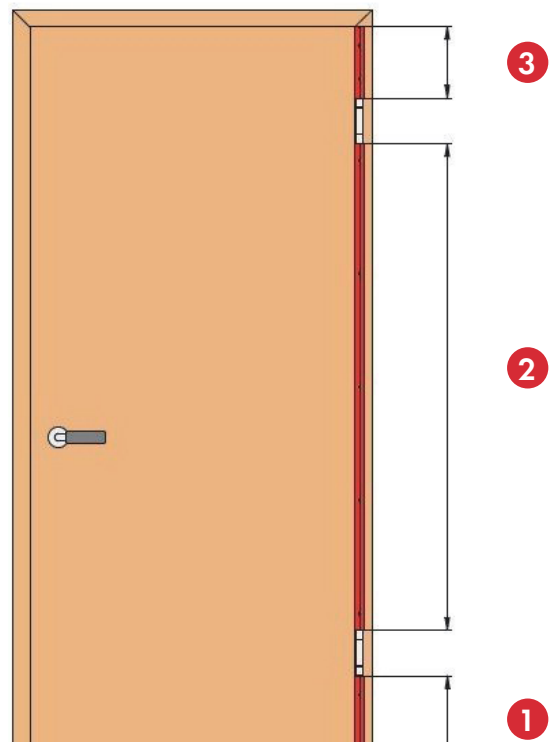
Application

Application

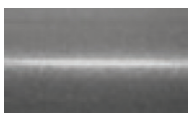
- > Fitted to most single action doors including automatic doors
- > Can be fitted to new doors and retrofitted to existing doors

Description

- > Designed to be fitted with our roller system finger protectors preventing finger trapping on the hinge pin side of the door (where the small gap is when the door is open- see drawing)
- > Supplied in 1.8 metre lengths predrilled and countersunk which can be cut to size and fitted between, above and below hinges
- > Suitable for standard 13mm diameter hinges, different diameters available, please enquire
- > Supplied with self-adhesive tape to assist with fitting



Finish options



Satin Anodised Aluminium (SAA)

Dimensions

